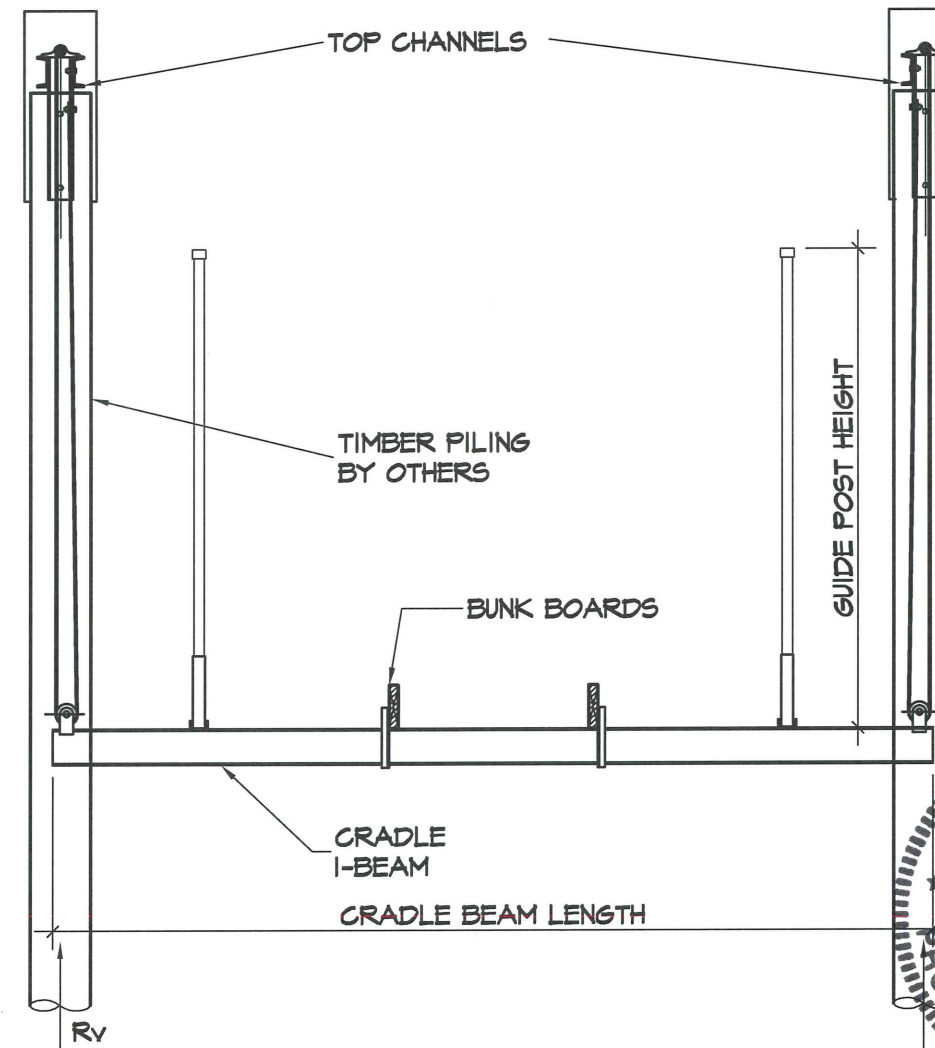
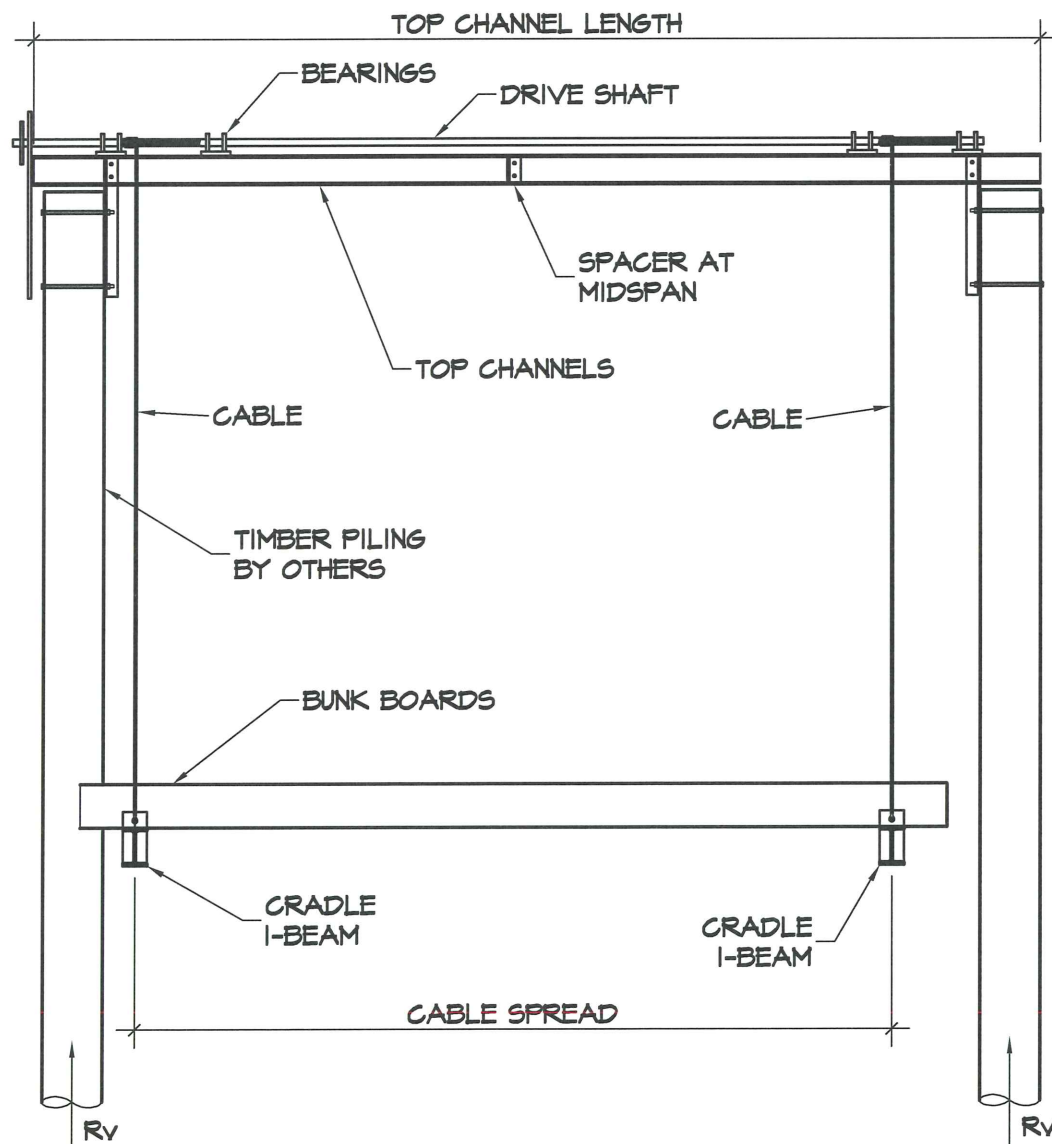


LIFT CAPACITY	TOP CHANNELS		CRADLE I-BEAM		BUNK BOARDS		CABLE SIZE	CABLE SPREAD	GUIDE POST HEIGHT	DRIVE SHAFT SIZE	VERTICAL REACTION, RV
	SIZE	LENGTH	SIZE	LENGTH	SIZE	LENGTH					
6000 LB.	2-C6X X2.834	12'-6"	WBX 6.181	12'-0"	2XB	12'-0"	1/4"	9'-1"	6'-8"	1 1/8" O.D SCH. 40 PIPE	2,000LB
10000 LB.	2-C8X 4.146	12'-6"	WBX 6.181	12'-6"	2XB	12'-0"	5/16" DOUBLED	9'-1"	6'-8"	1 1/8" O.D SCH. 40 PIPE	3,000LB
12000 LB.	2-C8X 4.146	12'-6"	WBX 7.023	12'-6"	2XB	12'-0"	5/16" DOUBLED	9'-1"	6'-8"	1 1/8" O.D SCH. 80 PIPE	4,000LB
16000 LB.	2-C8X 4.146	12'-6"	W10X 8.646	14'-0"	3XB	14'-0"	5/16" TRIPLED	8'-11"	10'-0"	1 1/8" O.D SCH. 80 PIPE	5,000LB
20000 LB.	2-C8X 5.789	12'-6"	W12X 14.292	14'-0"	3XB	14'-0"	3/8" TRIPLED	8'-11"	10'-0"	1 1/8" O.D SCH. 80 PIPE	6,700LB

**DESIGN CRITERIA NOTE:**  
 THIS STRUCTURE HAS BEEN DESIGNED FOR CALCULATED GRAVITY AND WIND LOADS IN COMPLIANCE WITH THE FLORIDA BUILDING CODE 2012, ADM 2010, AND ASCE 7-10 "MINIMUM DESIGN LOADS FOR BUILDINGS AND OTHER STRUCTURES" TO WITHSTAND LOADS ASSOCIATED WITH A BASE WIND SPEED OF 170 MPH (RISK CATEGORY I), EXPOSURE "D". BOATS SHALL NOT BE STORED ON LIFTS DURING HIGH WIND EVENTS. JOE DEREUIL ASSOCIATES HAS NO CONTROL OF THE MANUFACTURING, PERFORMANCE, OR INSTALLATION OF THIS PRODUCT. THESE GENERIC PLANS WERE ENGINEERED IN ACCORDANCE WITH ACCEPTED ENGINEERING PRACTICES AND DATA PROVIDED BY THE MANUFACTURER.

A QUALIFIED GEOTECHNICAL ENGINEER SHALL ASSESS THE CAPACITY OF THE SOILS TO RESIST THE VERTICAL REACTION INDICATED



**NOTES:**

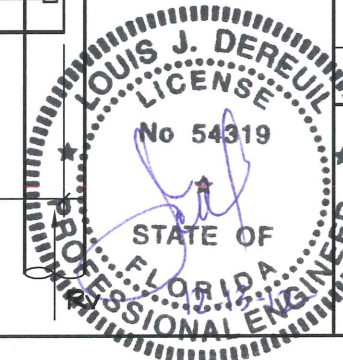
- LIFT CAPACITY IS TOTAL WEIGHT OF BOAT. WEIGHT OF BOAT SHALL BE EVENLY DIVIDED AMONG EACH CRADLE.
- BEAM AND CHANNEL SIZES ARE ALUMINUM ASSOCIATION STANDARD SIZES. C=CHANNEL, W=I-BEAM, FIRST NUMBER = DEPTH, SECOND NUMBER = WEIGHT IN LBS.PER FT.
- ALUMINUM SHAPES AND PLATES ARE TYPE 6061-T6
- PIPE IS A53, GALVANIZED
- CABLE IS STAINLESS STEEL
- ALL BOLTS ARE STAINLESS STEEL
- BUNK BOARDS ARE MARINE TREATED #2 SOUTHERN PINE
- ENGINEERING DESIGN IS FOR STRUCTURAL COMPONENTS SHOWN IN TABLE ABOVE ONLY.

6K, 10K, 12K, 16K, 20K 4-POST LIFTS

**QUALITY ALUMINUM BOATLIFTS**  
 29451 US Highway 98  
 Elberta, AL 36530

JOB LOCATION:  
 -

xxx xx, 20xx SHT. 1 OF 1



**JDA** JOE DEREUIL ASSOCIATES, LLC  
 STRUCTURAL ENGINEERS  
 301 WEST CERVANTES STREET PENSACOLA, FLORIDA 32501 (850) 429-1951  
 FLORIDA P.E. NO. 54319 / FLORIDA C.A. NO. 9515